



Account: 0123456789  
 Bill Date: 10-08-2009  
 Customer Name: TFS Customer  
 Service Address: 123 Sustainable Lane

A UniSource Energy Company

Previous Balance	- Payments/Credits	+ Charges/Debits	= Current Balance
7.88	7.88	7.88	7.88

SNAP DATE	SNAP AMOUNT
10-20-2009	\$7.88

DO NOT SEND PAYMENT. This bill is for your information only. Your SNAP designated account will be debited \$7.88 on 10/20/2009.  
 Payment: \$7.88 on 09/17/2009 - Thank you!

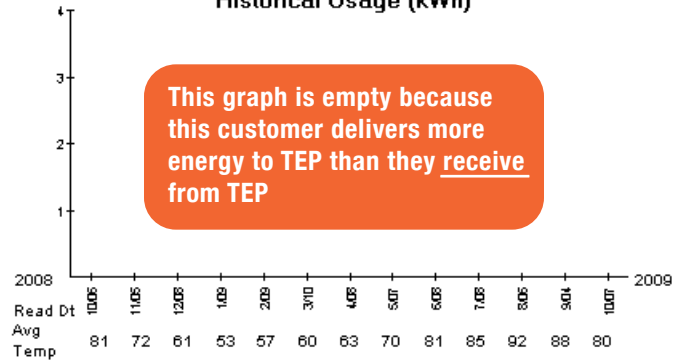
**R-01-Residential-Net (Service No: 0123)**

Once NET metering goes into effect, the top of your bill will say "Residential Net" instead of "Residential."

Electric Charges for Period 09-05-09 - 10-07-09

\* Credit usage carried forward from last month is 2,792.

DELIVERY SERVICES	
Customer Charge	7.00
POWER SUPPLY CHARGES	
PPFAC - kWh 0 @ \$0.00	
GREEN ENERGY CHARGES	
* Credit usage carried forward to next month is 2,835.	
TAXES AND ASSESSMENTS	
ACC Assessment	0.01
City Franchise Fee	0.16
State Sales Tax	0.41
County Sales Tax	0.04
City Sales Tax	0.14
City Public Utility Tax	0.12
<b>Total Electric Service Charges</b>	<b>7.88</b>



Meter	Unit of Measure	Next Read Date	Current Read Date	Prior Read Date	Days	Current Reading	- Prior Reading	= Reading Difference	x Multiplier	= Usage
SK2-123	kWh	11-6	10-7	9-4	33	4030	3776	254	1	254
SK2-123	KBH	11-6	10-7	9-4	33	5115	4818	297	1	297

This is the number associated with your meter. The bi-directional meter for your PV system starts with SK2, while your previous meter began with HX or XM.

kWh = energy delivered from TEP to the customer, in kilowatt hours.  
 KBH = energy received by TEP from the customer, in kilowatt hours.

The cumulative total of kilowatt hours since your meter was activated.

Current Reading - Prior Reading = Reading Difference

In the kWh row, this is the total amount of energy that TEP has delivered to you this month.  
 In the KBH row, this is the total amount of energy that TEP has received from your PV system this month.

NOTE: to find your NET USAGE subtract your monthly KBH usage from your monthly kWh usage  
 If you get a negative number that means you have delivered more energy from TEP than you received.

Monthly kWh Usage - Monthly KBH Usage = NET Usage

\* This excess energy will be listed on your bill as "Credit usage carried forward".